

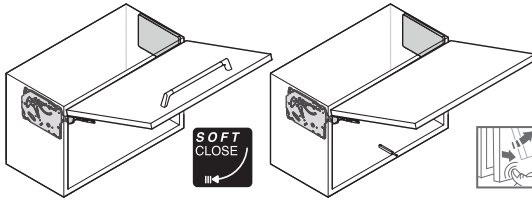


## Free Slim flap 1.12 Free Slim flap 1.10 push

372.92.xxx



<https://www.hafele.com/de/freeslim>



116525

732.23.046

[MS404]

HDE 02.10.2025

**1**

**A** 2x

**2**

**E** 2x

**H** 8x  
ø 4 x 15

**F** 2x

**3**

**C** **D**

**O** 2x

**G** 4x

**B** 8x  
ø 4 x 20

**+**

**P** 8x  
ø 3,5 x 9,5

**+**

**I** **J** **K**

**L** 2x

push

372.92.XXX

**+**

**M** 2x

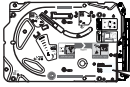
**N** 14x

M4x8

19 - 21



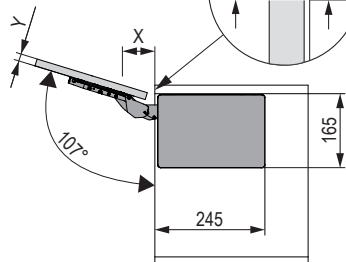
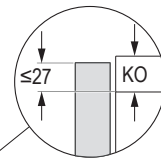
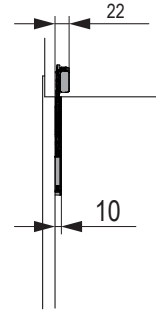
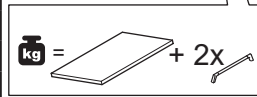
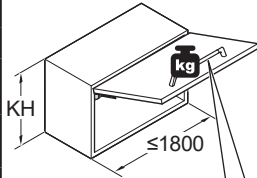
i



Article No: 372.92.xxx  
 Check Date: 02/09/25  
 Model: flap soft-close / flap push  
 Spring: 2x3 mm



PF* = KH x	Free Slim flap 1.12	Free Slim flap 1.10 push	372.92.xxx
	372.92.xxx	372.92.xxx	
* Power Factor	PF 480 - 4800	PF 480 - 4080	
KH			
225	2.1 - 21.3	2.1 - 18.1	Type 3 - strong (17.5 - 36.8 N)
250	1.9 - 19.2	1.9 - 16.3	
275	1.7 - 17.5	1.7 - 14.8	
300	1.6 - 16.0	1.6 - 13.6	
325	1.5 - 14.8	1.5 - 12.6	
350	1.4 - 13.7	1.4 - 11.7	
375	1.3 - 12.8	1.3 - 10.9	
400	1.2 - 12.0	1.2 - 10.2	
425	1.1 - 11.3	1.1 - 9.6	
450	1.1 - 10.7	1.1 - 9.1	
475	1.0 - 10.1	1.0 - 8.6	
500	1.0 - 9.6	1.0 - 8.2	
525	0.9 - 9.1	0.9 - 7.8	
550	0.9 - 8.7	0.9 - 7.4	
575	0.8 - 8.3	0.8 - 7.1	
600	0.8 - 8.0	0.8 - 6.8	
625	0.8 - 7.7	0.8 - 6.5	
650	0.7 - 7.4	0.7 - 6.3	



KO	Y	X
16 (19)	16	61 (71)
	18	54 (64)
	19	51 (61)
	22	41 (51)
	24	34 (44)
	26	27 (37)
28	20 (30)	

116525

732.23.046

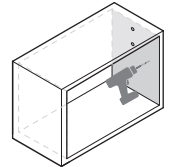
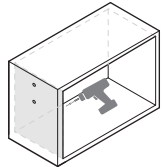
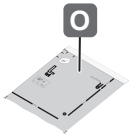
[WS404]

HDE 02.10.2025

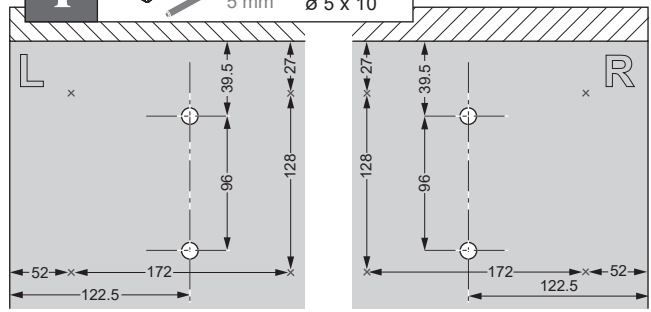
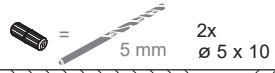
1



i



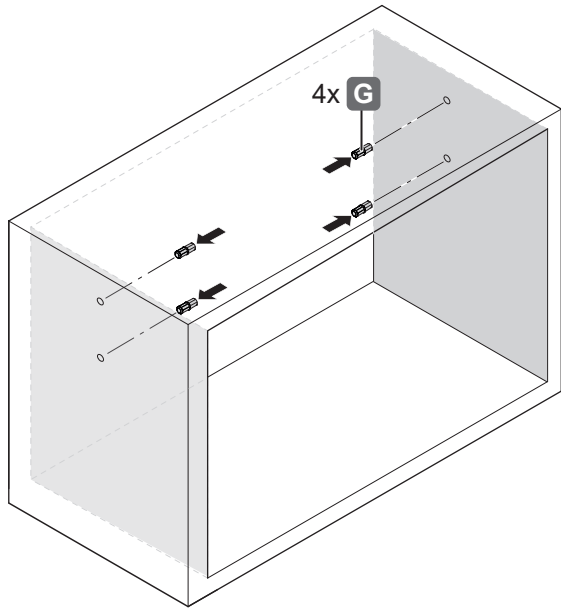
i



116525

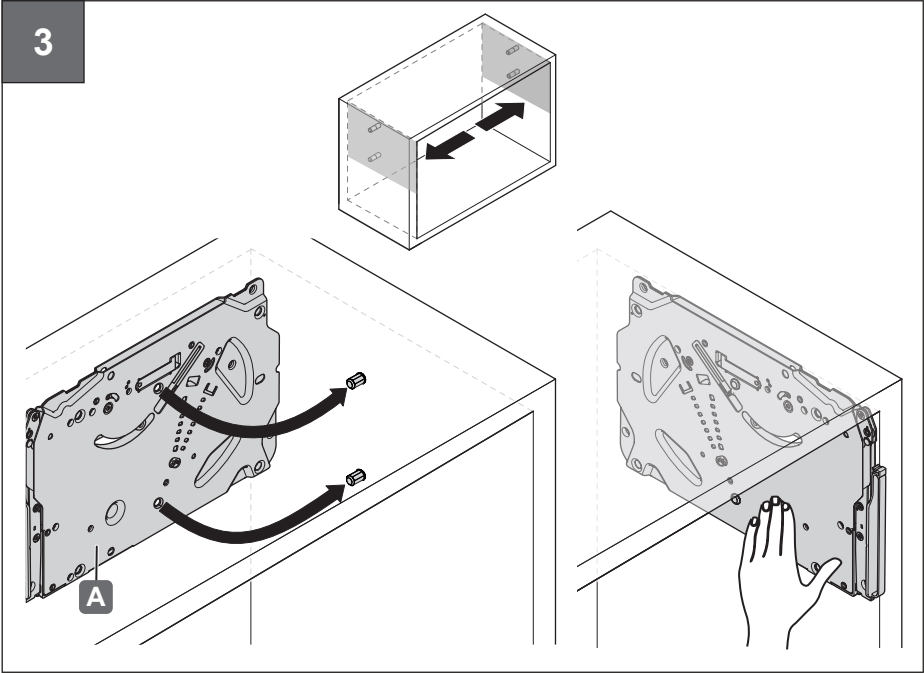
732.23.046

2



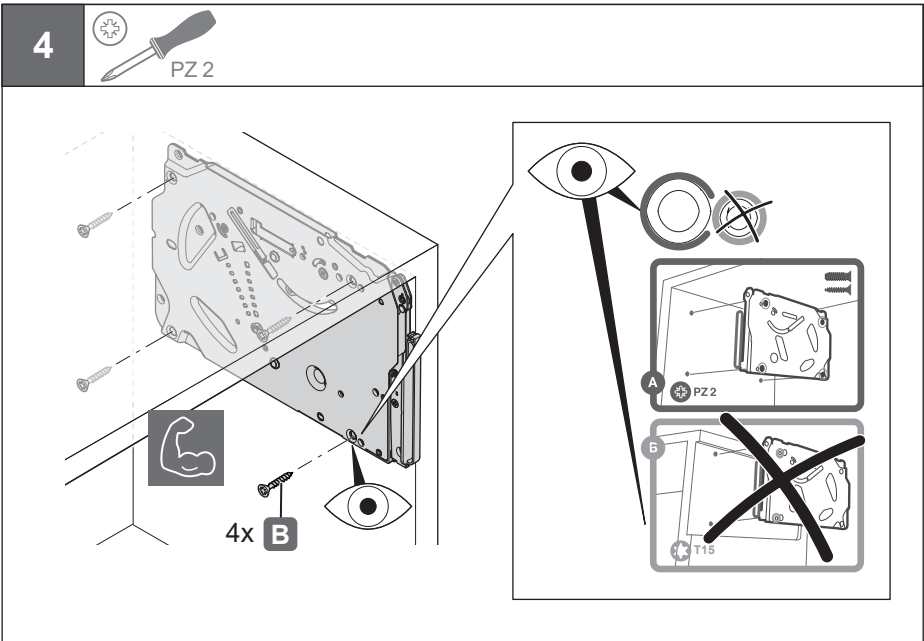
[WS404]

HDE 02.10.2025



116525

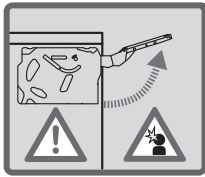
732.23.046



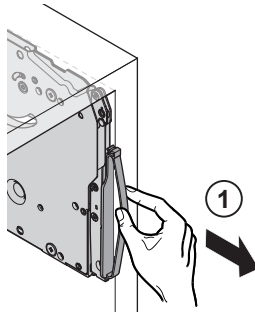
[WS404]

HDE 02.10.2025

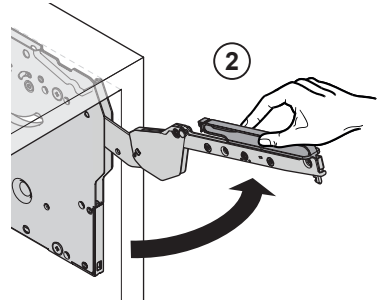
5



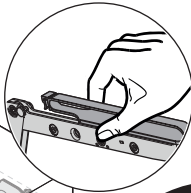
MIN. FORCE



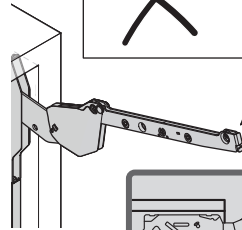
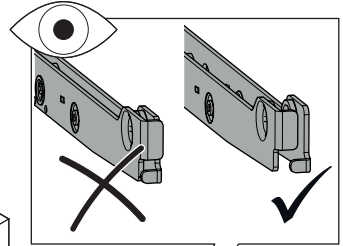
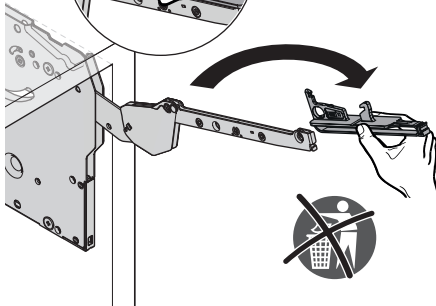
1



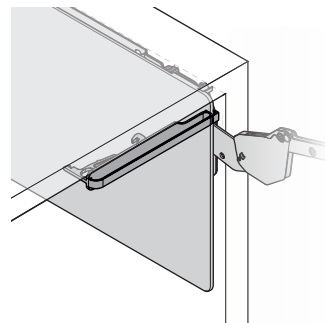
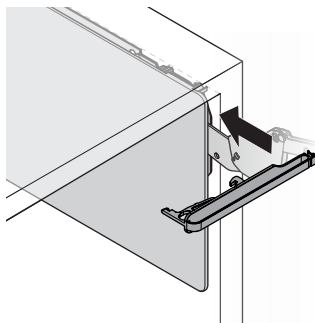
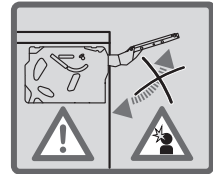
2



3



4



116525

732.23.046

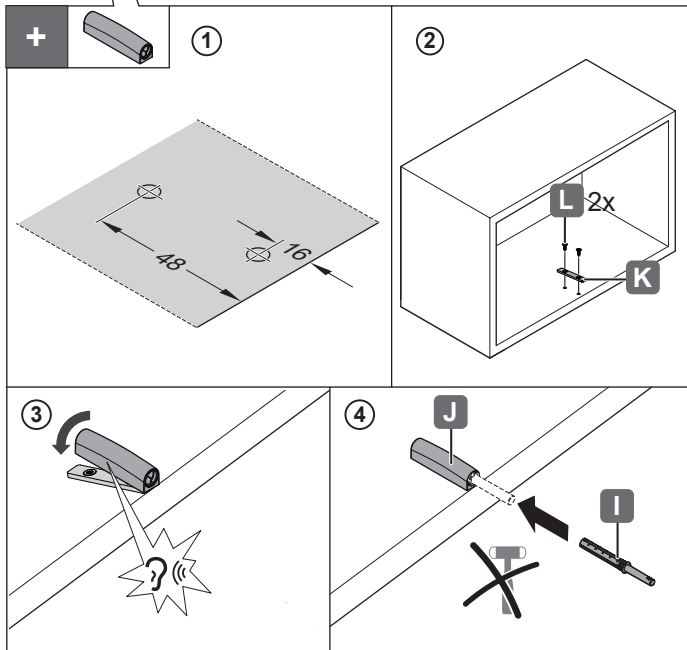
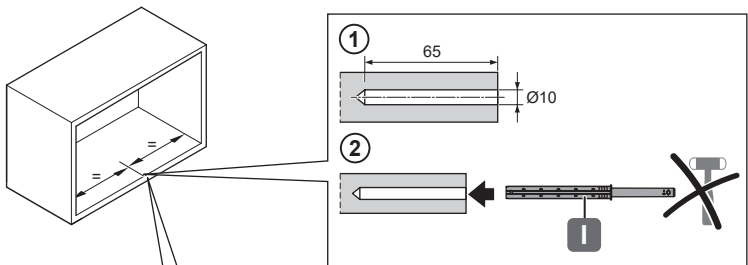
[WS404]

HDE 02.10.2025

6



push



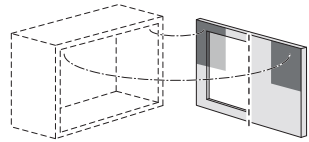
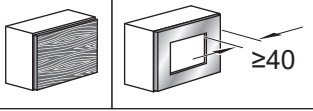
116525

732.23.046

[WS404]

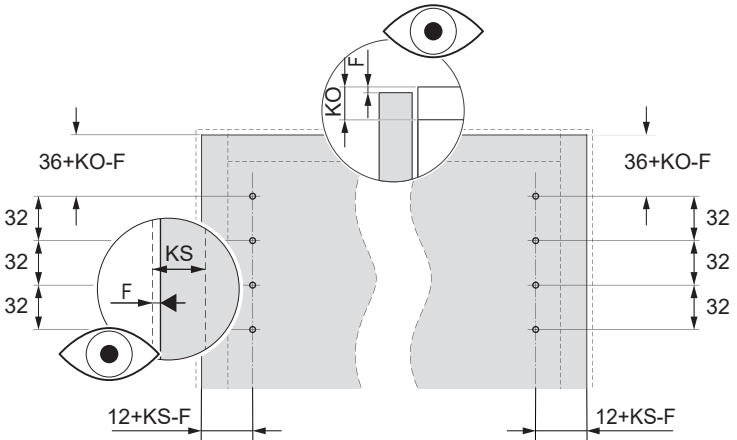
HDE 02.10.2025

7a

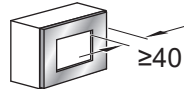
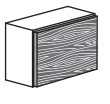


116525

732.23.046

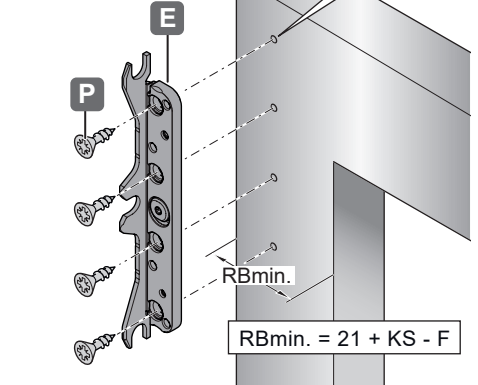
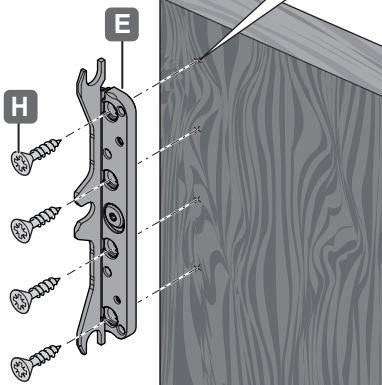


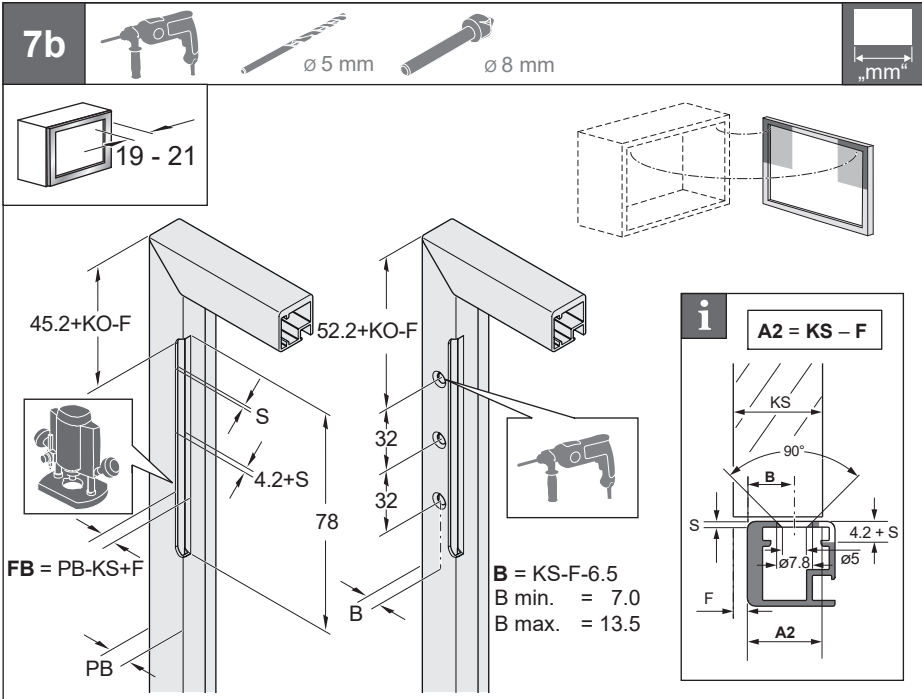
8a



[WS404]

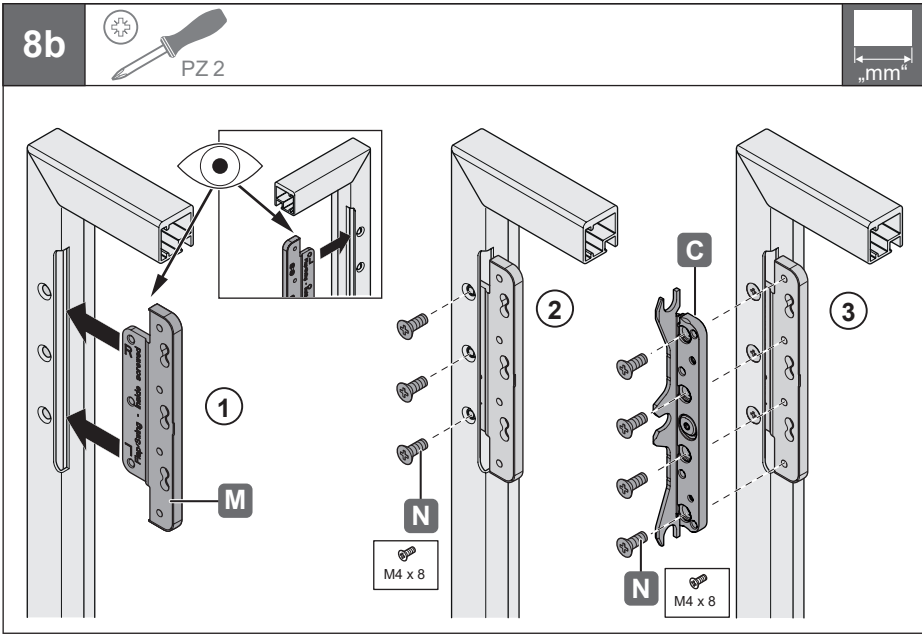
HDE 02.10.2025





116525

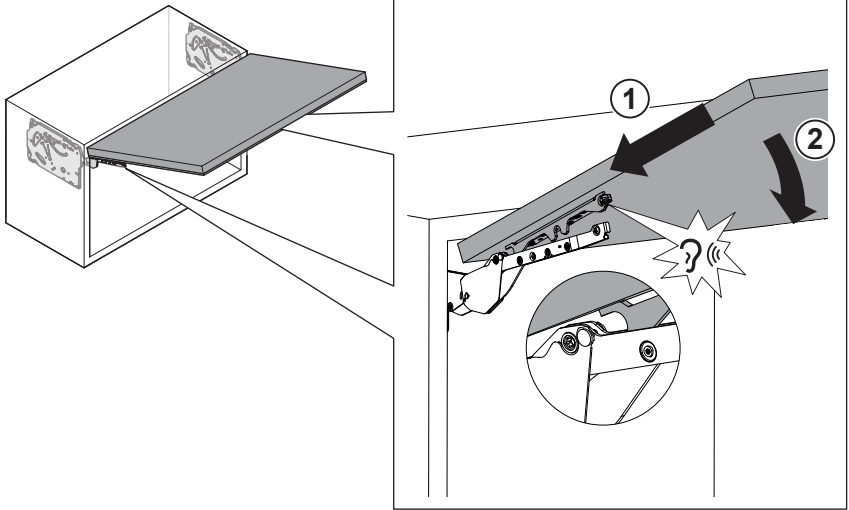
732.23.046



[WS404]

HDE 02.10.2025

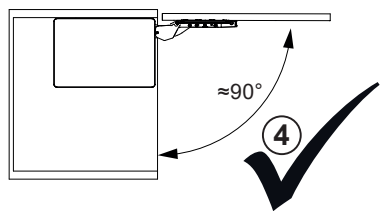
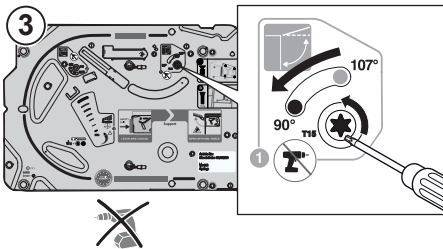
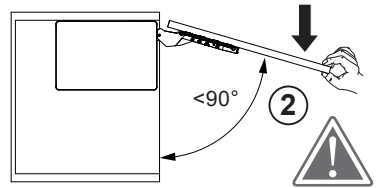
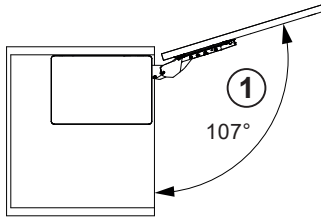
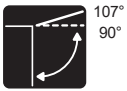
9



116525

732.23.046

10



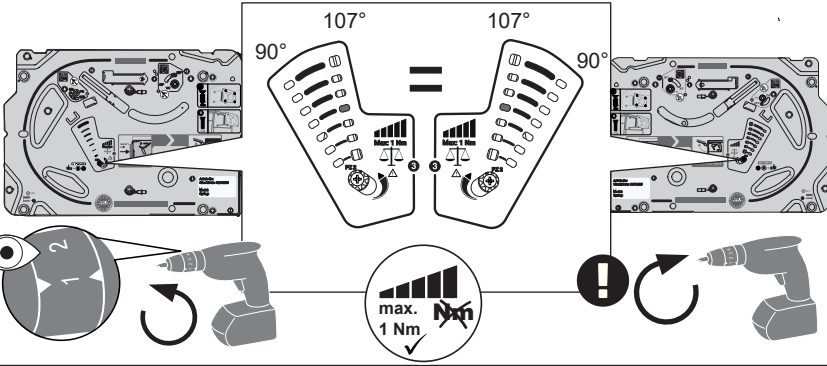
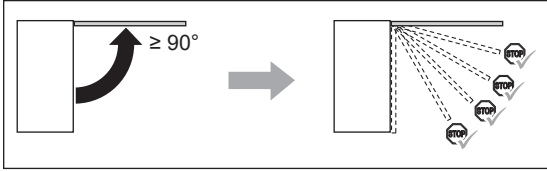
[WS404]

HDE 02.10.2025

11



PZ2



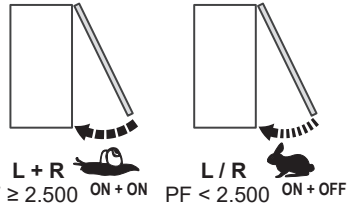
116525

732.23.046

12

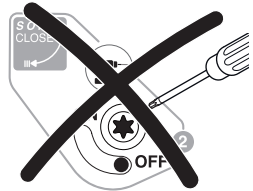
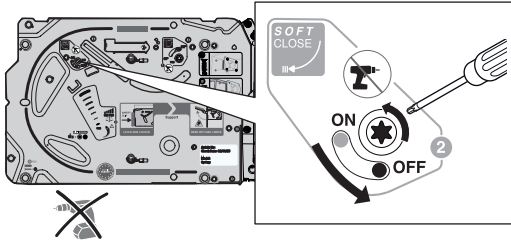


T15



L + R  $PF \geq 2.500$  ON + ON

L / R  $PF < 2.500$  ON + OFF



[WS404]

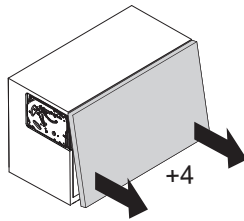
HDE 02.10.2025

13

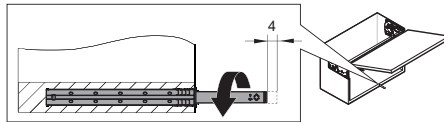


push

116525



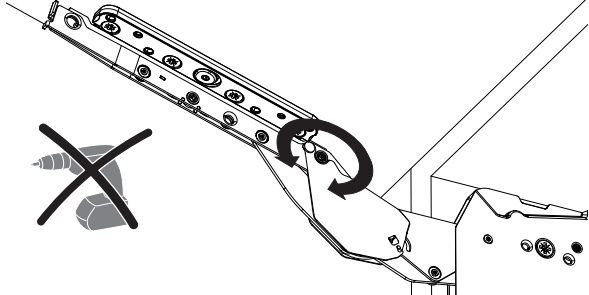
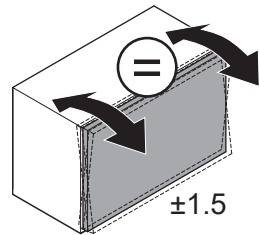
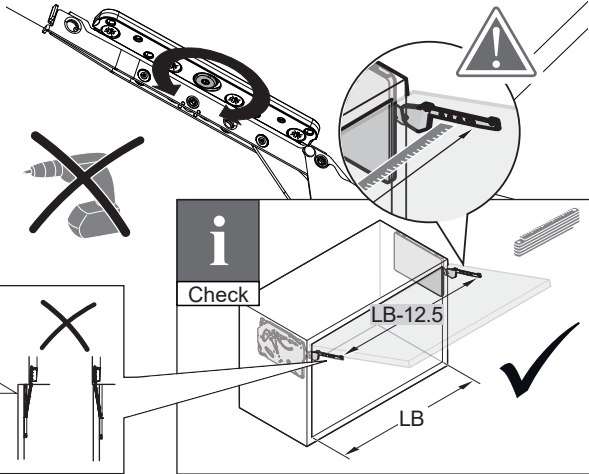
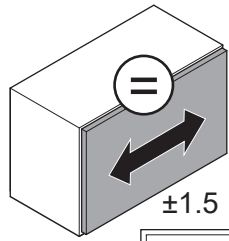
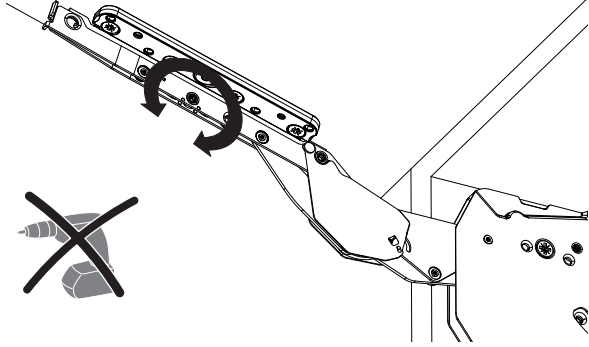
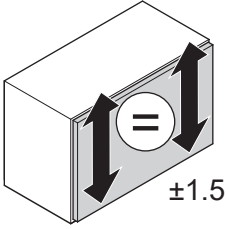
732.23.046



[WS404]

HDE 02.10.2025

14



116525

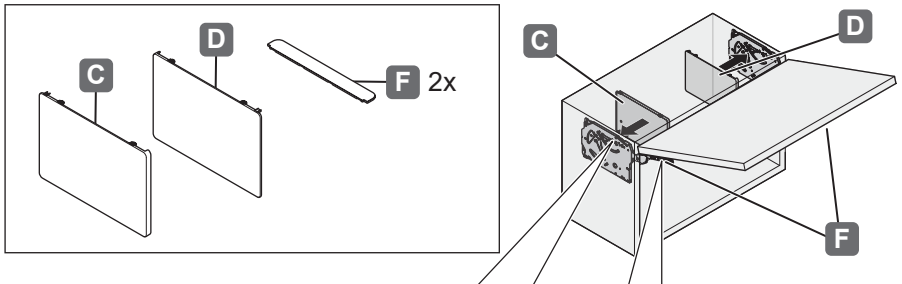
732.23.046

[WS404]

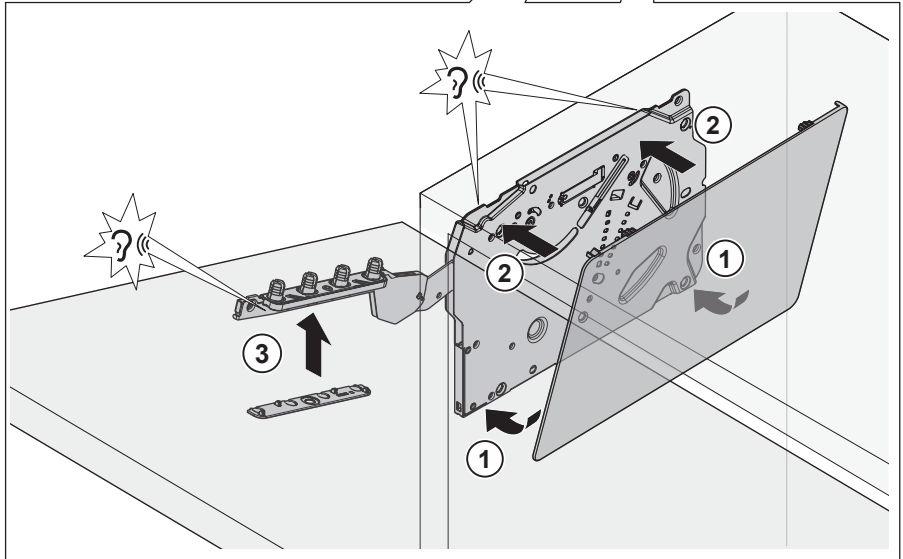
HDE 02.10.2025

15

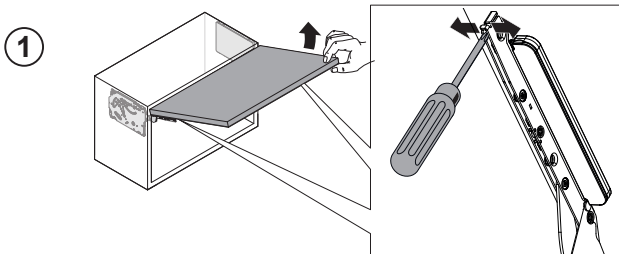
116525



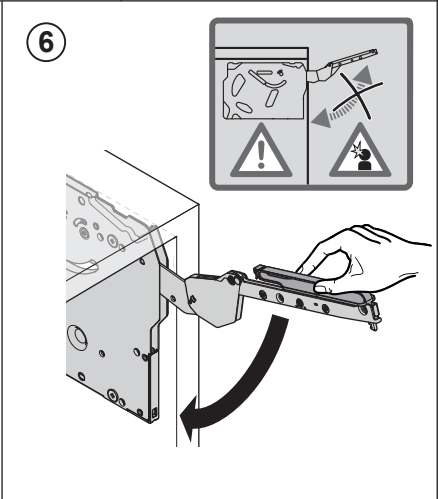
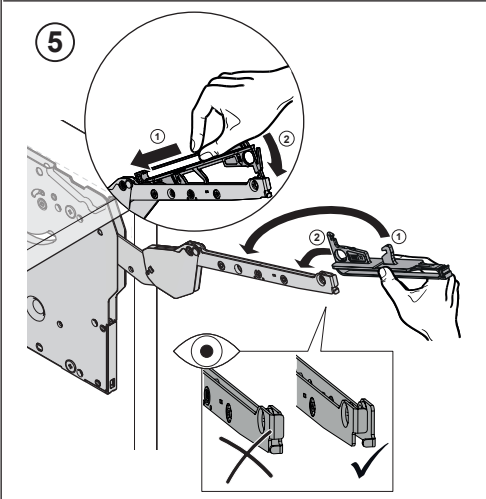
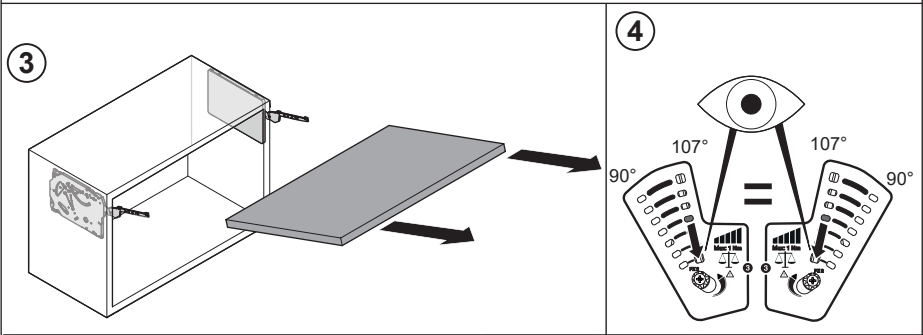
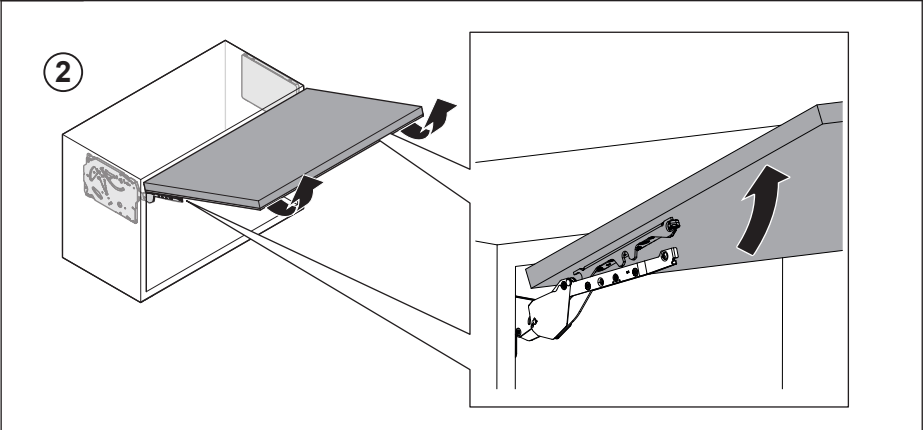
732.23.046



[WS404]



HDE 02.10.2025



116525

732.23.046

[WS404]

HDE 02.10.2025

